

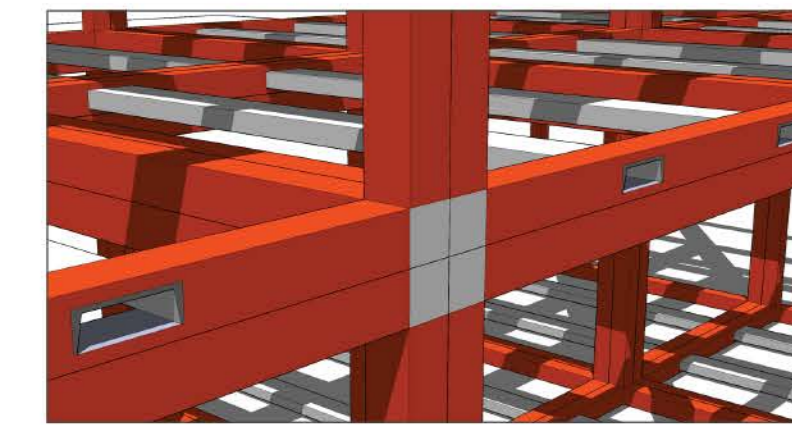
# XTREME CUBE

Xtreme Cubes begin as structural space frames available in 8ft, 10ft, or 12ft widths & lengths with a standard height of 10ft (12ft height optional).



8' W x 8' L    10' W x 10' L    12' W x 12' L

Modular Construction with Integrated Fork Pockets



Trade Show Display



Folding Steel Roof System



## Features and Benefits

- Xtreme Cubes are the next generation of modular construction. Portable, durable, and highly customizable, Xtreme Cubes can be designed for any application in any location.
- Custom Engineered Solutions  
Structural / Electrical / HVAC / Plumbing / Data
- Welded Structural Steel Space Frame
- Plug-and-Play Cube Connections
- Modular Panels, Windows, and Doors
- Easy Transport and Setup
- Certified Manufacturer for USA and Canada
- Versatile Corner Design: Pick, Connect, Anchor
- Large Open Floor Plan Capability
- High Quality, Long Lasting Components
- Unlimited Mobilizations



## Integrated Cube Building

Carlin, NV (8,640 sq ft)



## Maintenance Facility

Manitoba, Canada (11,760 sq ft)



Office



Storage (Built-in Shelving)



Lube (Built-in Tanks, Pumps, & Hose Reels)



## Turn-Key Solutions

Restroom



Locker Room



## Lunch Room

Alberta, Canada (2,880 sq ft)



## Multi-Story Retail Complex

Las Vegas, NV (18,224 sq ft)



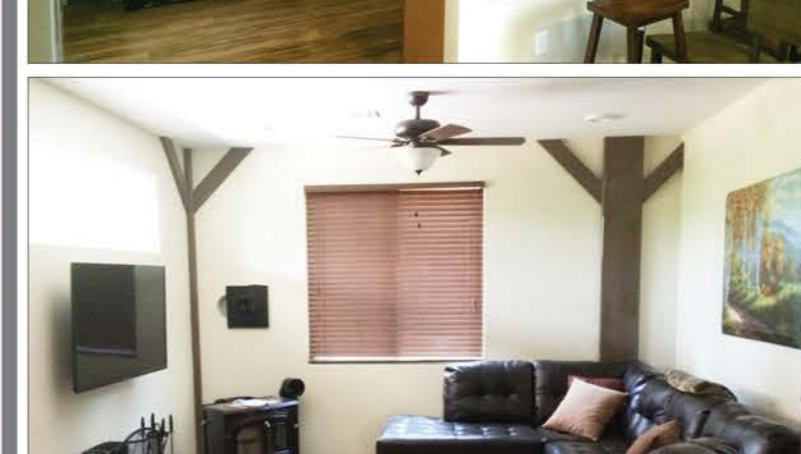
## Multi-Story Retail Complex

Las Vegas, NV (11,120 sq ft)



## Cube Cabin

Duck Creek, UT (1,825 sq ft)

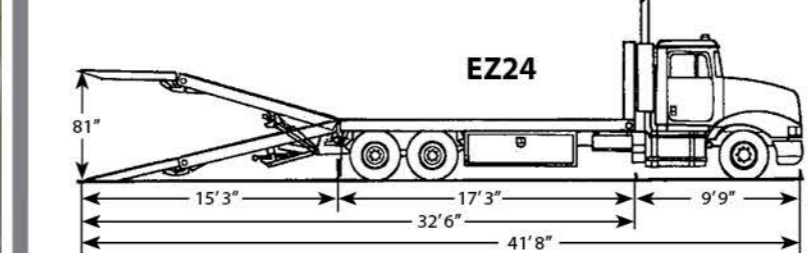
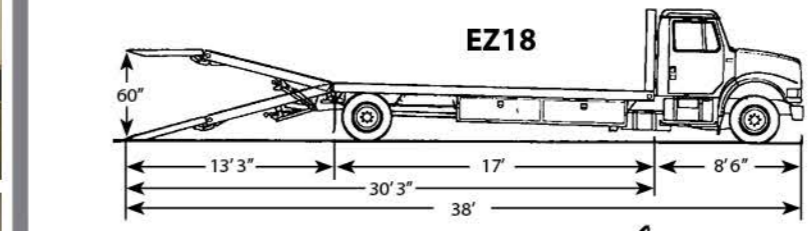
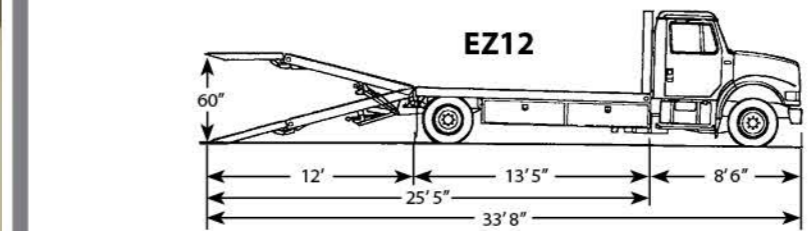


# EZ LOADER

- Bulkhead bolted to frame
- Traction plate full ramp
- 17 sec ramp deployment
- Dock loading ability



## DIMENSIONS AND SPECIFICATIONS



	EZ12	EZ18	EZ24 (tandem axle)
<b>Capacities</b>			
Bed Capacity	12,000 lbs	18,000 lbs	24,000 lbs
Dove Tail Load Capacity	8,000 lbs	10,000 lbs	15,000 lbs
Tow Capacity	5,000 lbs	5,000 lbs	10,000 lbs
Approximate G.V.W.	26,000 lbs	33,000 lbs	48,000 lbs
Hydraulic Pump P.T.O.	14 GPM	14 GPM	14 GPM
<b>Dimensions</b>			
Overall Bed W/L	8' 6" W x 21' 3" L	8' 6" W x 25' 3" L	8' 6" W x 27' 6" L
Main Bed W/L	8' 6" W x 13' 5" L	8' 6" W x 17' L	8' 6" W x 17' 3" L
Dove Tail W/L	8' 6" W x 7' 5" L	8' 6" W x 8' L	8' 6" W x 10' L
Flip Tail W/L	8' 6" W x 4' 7" L	8' 6" W x 5' 3" L	8' 6" W x 5' 3" L
Bulk Head Height	60"	60"	60"
Cab to Axle Length	138"	185"	164"
Ramp Length	11'11"	13'4"	14'9"
Bed Height	41"	46"	48"
Max Dock Height	65"	66"	75"
Ramp Degree/%	18/32%	18/32%	15/27%
Hitch Receiver Tube	2"	2"	2"
Wood Thickness	1"	1"	1"
Warranty (Bed Only)	1 Year All Components / 3 Year Structural		

Note: Dimensions may change depending on truck manufacturer and model.

# XTREME MANUFACTURING

8350 Eastgate Rd Henderson, NV 89015  
T: (702) 636-2969 T: (800) 497-1704  
sales@xmfg.com

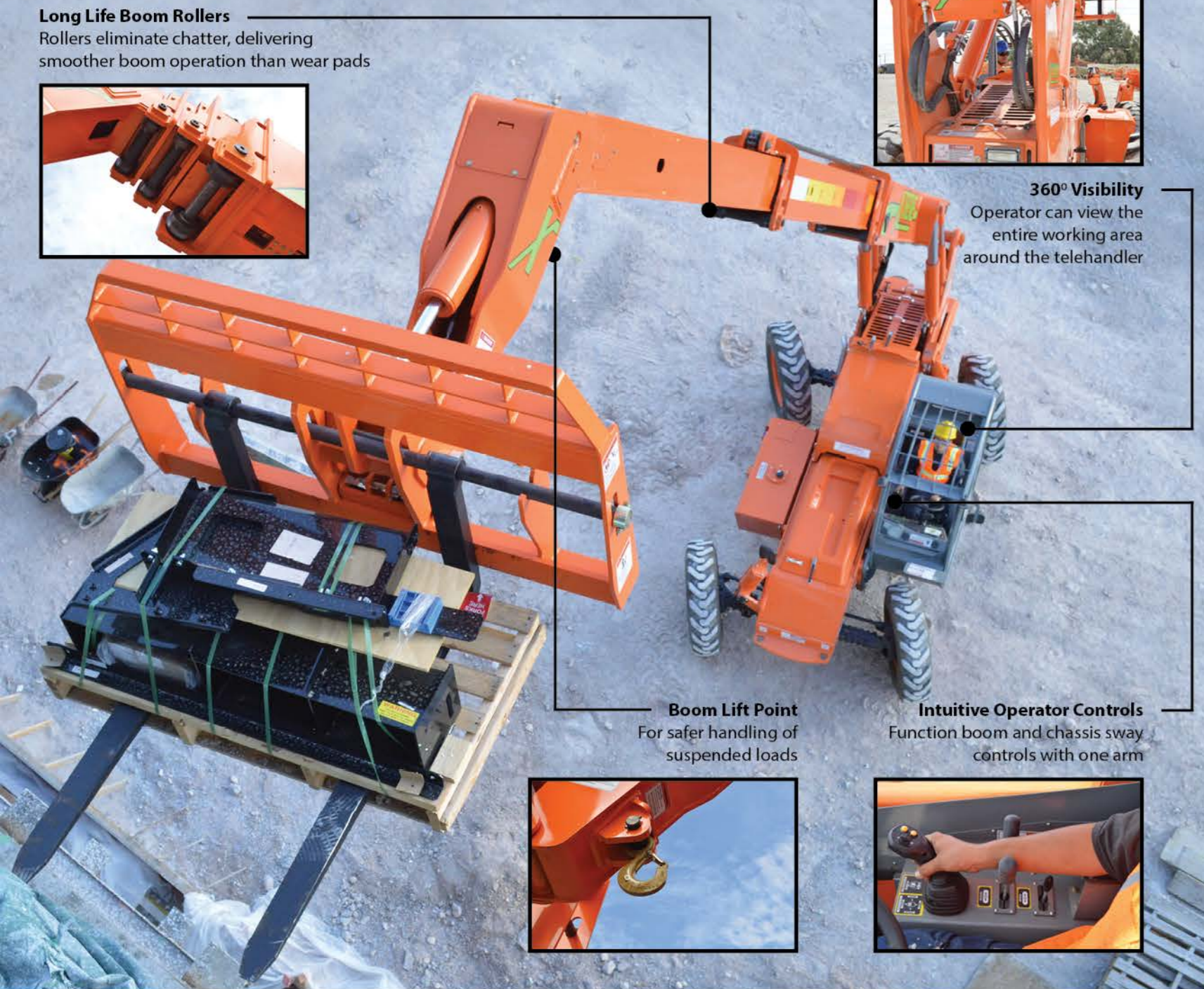
Specifications subject to change without notice. Photos and diagrams in this brochure are for promotional purposes only. Refer to the appropriate Xtreme operation manual for detailed instructions on proper use, specifications, and maintenance of equipment.

# XTREME MANUFACTURING



www.XMFG.COM





**THE XTREME DIFFERENCE**

**10-5-2 WARRANTY**

- 10 YEARS OR 10,000 HOURS FRAME & CHASSIS WELDMENT
- 5 YEARS OR 5,000 HOURS BOOM WELDMENT & ROLLERS
- 2 YEARS OR 2,000 HOURS ENGINE, ELECTRICAL, TRANSMISSION, DRIVE AXLES & HYDRAULIC COMPONENTS

**XTREME MANUFACTURING**

Standard Auxiliary Hydraulics	"Y" Frame Sway Handle	Long Life Lexan Labels
Solid Steel Plate Chassis	Heavy Duty Pre-Cleaner	Heavy Duty Boom Chains
Steel Dash	Additional High Pressure Hyd Filter	Suspended Pedals
Ductile Steel Manifold	Direct Engine/Trans Connection	Electrical Ring Terminals
Easy Cab Mounted Grab Handles	Individual Gauges and Switches	Wider Outrigger Stance
Reliable Tier 4 Compliant Engines	360° Visibility	Large Capacity Fuel Tanks
Master Disconnect Switch	Long Life Boom Rollers	Trunnion Mounted Sway Cylinders
Boom Lift Point	Suspension Seat	Melotte Pins
Axle Mounted Outriggers	Easy Service Access	Rear Axle Stabilization (RAS)
Large Cross Section Boom	Protected Tilt & Extend Cylinders	Center Mounted Power Train
Easy Tie Downs	Steel Hydraulic & Fuel Tanks	Intuitive Operator Controls

(Individual model standard equipment may vary. Consult your salesperson.)

Learn more about the Xtreme Difference at [www.XMFG.com](http://www.XMFG.com)

**XR5919**

**A - CLASS CARRIAGE** ■ **COMPACT BOOM**

- 5,900 lbs Capacity
- 19ft Lift Height
- 74 hp

Capacity	5,900 lbs
Max. Lift Height	19'
Forward Reach	11'
Frame Leveling L/R	N/A
Weight	10,800 lbs
Engine	Deutz 74 hp
Fuel Capacity	48 gal
Tires	12.00 x 16.5 pneumatic
GPM	26
PSI	3,500
Hydraulic Oil Cap	24 gal
Length to fork face	12' 8"
Width	71"
Height	6' 7"
Wheel Base	93"
Ground Clearance	16.5"
Turning Radius	11'
Warranty	Xtreme 10-5-2

**XR842**

**B - CLASS CARRIAGE** ■ **HIGH PIVOT ROLLER BOOM**

- 8,000 lbs Capacity
- 42ft Lift Height
- 99 hp

Capacity	8,000 lbs
Max. Lift Height	42'
Forward Reach	28' 10"
Frame Leveling L/R	11°
Weight	28,460 lbs
Engine	Perkins 99 hp
Fuel Capacity	48 gal
Tires	Foam Filled 13.00 x 24
GPM	39
PSI	3,500
Hydraulic Oil Cap	58 gal
Length to fork face	20' 9"
Width	101"
Height	8' 1"
Wheel Base	120"
Ground Clearance	16.5"
Turning Radius	12'
Warranty	Xtreme 10-5-2

**XR1045**

**B - CLASS CARRIAGE** ■ **HIGH PIVOT ROLLER BOOM**

- 10,000 lbs Capacity
- 45ft Lift Height
- 120 hp

Capacity	10,000 lbs
Max. Lift Height	45'
Forward Reach	30' 4"
Frame Leveling L/R	11°
Weight	30,610 lbs
Engine	Perkins 120 hp
Fuel Capacity	48 gal
Tires	Foam Filled 13.00 x 24
GPM	49
PSI	3,500
Hydraulic Oil Cap	58 gal
Length to fork face	21' 3"
Width	102"
Height	8' 1"
Wheel Base	120"
Ground Clearance	16.5"
Turning Radius	12' 2"
Warranty	Xtreme 10-5-2

**XR1245**

**B - CLASS CARRIAGE** ■ **HIGH PIVOT ROLLER BOOM**

- 12,000 lbs Capacity
- 45ft Lift Height
- 120 hp

Capacity	12,000 lbs
Max. Lift Height	45'
Forward Reach	30' 4"
Frame Leveling L/R	11°
Weight	34,380 lbs
Engine	Perkins 120 hp
Fuel Capacity	72 gal
Tires	Foam Filled 15.5 x 25
GPM	49
PSI	3,500
Hydraulic Oil Cap	58 gal
Length to fork face	22' 2"
Width	102"
Height	8' 1"
Wheel Base	124"
Ground Clearance	16.5"
Turning Radius	12' 2"
Warranty	Xtreme 10-5-2

**XR1255**

**B - CLASS CARRIAGE** ■ **HIGH PIVOT ROLLER BOOM**

- 12,000 lbs Capacity
- 55ft Lift Height
- 120 hp

Capacity	12,000 lbs
Max. Lift Height	55'
Forward Reach	38'
Frame Leveling L/R	11°
Weight	47,100 lbs
Engine	Perkins 120 hp
Fuel Capacity	72 gal
Tires	Foam Filled 15.5 x 25
GPM	49
PSI	3,500
Hydraulic Oil Cap	58 gal
Length to fork face	24' 8"
Width	102"
Height	8' 1"
Wheel Base	141"
Ground Clearance	15"
Turning Radius	15' 10"
Warranty	Xtreme 10-5-2

**XR1270**

**B - CLASS CARRIAGE** ■ **HIGH PIVOT ROLLER BOOM**

- 12,000 lbs Capacity
- 70ft Lift Height
- 130 hp

Capacity	12,000 lbs
Max. Lift Height	70'
Forward Reach	53' 10"
Frame Leveling L/R	8°
Weight	47,100 lbs
Engine	Perkins 130 hp
Fuel Capacity	48 gal
Tires	Foam Filled 17.5 x 25
GPM	49
PSI	4,000
Hydraulic Oil Cap	58 gal
Length to fork face	26' 6"
Width	102"
Height	8' 1"
Wheel Base	147"
Ground Clearance	15"
Turning Radius	15' 10"
Warranty	Xtreme 10-5-2

**XR1534**

**C - CLASS CARRIAGE** ■ **HIGH CAPACITY ROLLER BOOM**

- 15,000 lbs Capacity
- 34ft Lift Height
- 120 hp

Capacity	15,000 lbs
Max. Lift Height	34'
Forward Reach	17'
Frame Leveling L/R	11°
Weight	32,480 lbs
Engine	Perkins 120 hp
Fuel Capacity	48 gal
Tires	Foam Filled 15.5 x 25
GPM	49
PSI	4,300
Hydraulic Oil Cap	58 gal
Length to fork face	22'
Width	102"
Height	8' 1"
Wheel Base	124"
Ground Clearance	16.5"
Turning Radius	12' 2"
Warranty	Xtreme 10-5-2

**XR1642**

**C - CLASS CARRIAGE** ■ **HIGH CAPACITY ROLLER BOOM**

- 16,000 lbs Capacity
- 42ft Lift Height
- 130 hp

Capacity	16,000 lbs
Max. Lift Height	42'
Forward Reach	24' 10"
Frame Leveling L/R	8°
Weight	41,000 lbs
Engine	Perkins 130 hp
Fuel Capacity	72 gal
Tires	Foam Filled 17.5 x 25
GPM	49
PSI	4,000
Hydraulic Oil Cap	58 gal
Length to fork face	26' 1"
Width	102"
Height	8' 1"
Wheel Base	147"
Ground Clearance	15"
Turning Radius	15' 10"
Warranty	Xtreme 10-5-2

**XR2034**

**C - CLASS CARRIAGE** ■ **HIGH CAPACITY ROLLER BOOM**

- 20,000 lbs Capacity
- 34ft Lift Height
- 130 hp

Capacity	20,000 lbs
Max. Lift Height	34'
Forward Reach	16' 7"
Frame Leveling L/R	8°
Weight	40,150 lbs
Engine	Perkins 130 hp
Fuel Capacity	72 gal
Tires	Foam Filled 17.5 x 25
GPM	49
PSI	4,000
Hydraulic Oil Cap	58 gal
Length to fork face	22' 6"
Width	102"
Height	8' 1"
Wheel Base	147"
Ground Clearance	15"
Turning Radius	15' 10"
Warranty	Xtreme 10-5-2

**XR2045**

**C - CLASS CARRIAGE** ■ **HIGH CAPACITY ROLLER BOOM**

- 20,000 lbs Capacity
- 45ft Lift Height
- 130 hp

Capacity	20,000 lbs
Max. Lift Height	45'
Forward Reach	27' 4"
Frame Leveling L/R	8°
Weight	44,750 lbs
Engine	Perkins 130 hp
Fuel Capacity	72 gal
Tires	Foam Filled 17.5 x 25
GPM	49
PSI	4,000
Hydraulic Oil Cap	58 gal
Length to fork face	22' 6"
Width	102"
Height	9' 6"
Wheel Base	148"
Ground Clearance	15"
Turning Radius	16' 8"
Warranty	Xtreme 10-5-2

**XR2450**

**D - CLASS CARRIAGE** ■ **ULTRA HIGH CAPACITY ROLLER BOOM**

- 24,000 lbs Capacity
- 50ft Lift Height
- 130 hp

Capacity	24,000 lbs
Max. Lift Height	50'
Forward Reach	30'
Frame Leveling L/R	8°
Weight	52,500 lbs
Engine	Perkins 130 hp
Fuel Capacity	72 gal
Tires	Foam Filled 16.00 x 25
GPM	49
PSI	4,000
Hydraulic Oil Cap	58 gal
Length to fork face	23' 11"
Width	102"
Height	9' 6"
Wheel Base	148"
Ground Clearance	15"
Turning Radius	16' 8"
Warranty	Xtreme 10-5-2

**XR3034**

**D - CLASS CARRIAGE** ■ **ULTRA HIGH CAPACITY ROLLER BOOM**

- 30,000 lbs Capacity
- 34ft Lift Height
- 130 hp

Capacity	30,000 lbs
Max. Lift Height	34'
Forward Reach	17' 6"
Frame Leveling L/R	8°
Weight	47,850 lbs
Engine	Perkins 130 hp
Fuel Capacity	72 gal
Tires	Foam Filled 16.00 x 25
GPM	49
PSI	4,500
Hydraulic Oil Cap	58 gal
Length to fork face	23' 11"
Width	118"
Height	9' 10"
Wheel Base	148"
Ground Clearance	15"
Turning Radius	21' 11"
Warranty	Xtreme 10-5-2

**XR4030**

**E - CLASS CARRIAGE** ■ **XTREME CAPACITY ROLLER BOOM**

- 40,000 lbs Capacity
- 30ft Lift Height
- 173 hp

Capacity	40,000 lbs
Max. Lift Height	30'
Forward Reach	16' 4"
Frame Leveling L/R	8°
Weight	63,000 lbs
Engine	Cummins 173 hp
Fuel Capacity	150 gal
Tires	Foam Filled 23.5 R29
GPM	92
PSI	4,200
Hydraulic Oil Cap	140 gal
Length to fork face	27' 9"
Width	135"
Height	11' 7"
Wheel Base	188"
Ground Clearance	20.5"
Turning Radius	24' 6"
Warranty	Xtreme 10-5-2

**XR7038**

**F - CLASS CARRIAGE** ■ **ULTRA XTREME CAPACITY ROLLER BOOM**

- 70,000 lbs Capacity
- 38ft Lift Height
- 300 hp

Capacity	70,000 lbs
Max. Lift Height	38' 2"
Forward Reach	22'
Frame Leveling L/R	7°
Weight	115,000 lbs
Engine	Cummins 300 hp
Fuel Capacity	150 gal
Tires	Foam Filled 29.5 R29
GPM	92
PSI	4,200
Hydraulic Oil Cap	140 gal
Length to fork face	27' 9"
Width	135"
Height	11' 7"
Wheel Base	188"
Ground Clearance	20.5"
Turning Radius	24' 6"
Warranty	Xtreme 10-5-2