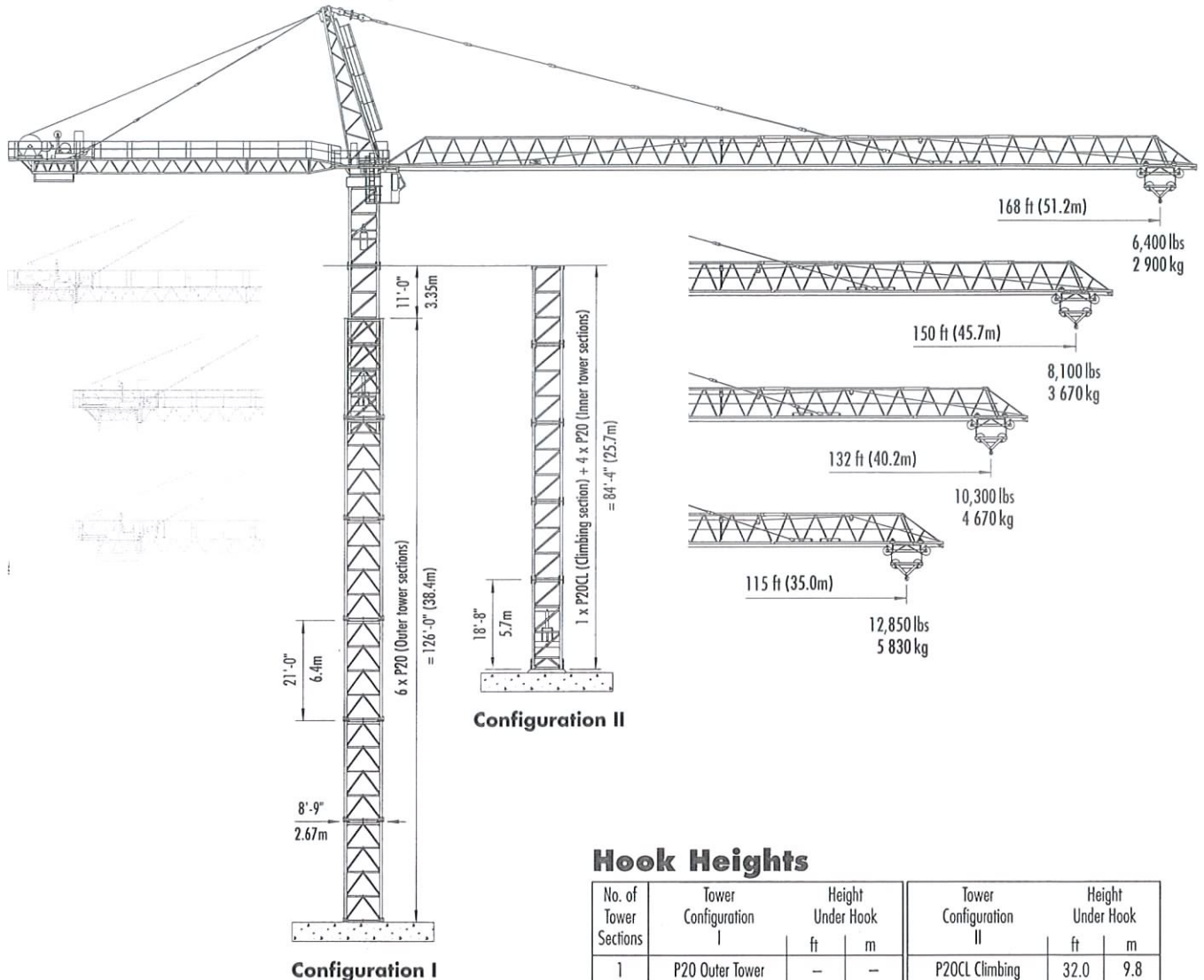


Pecco PC 2000

TOWER CRANE



**STATIONARY
FREESTANDING**

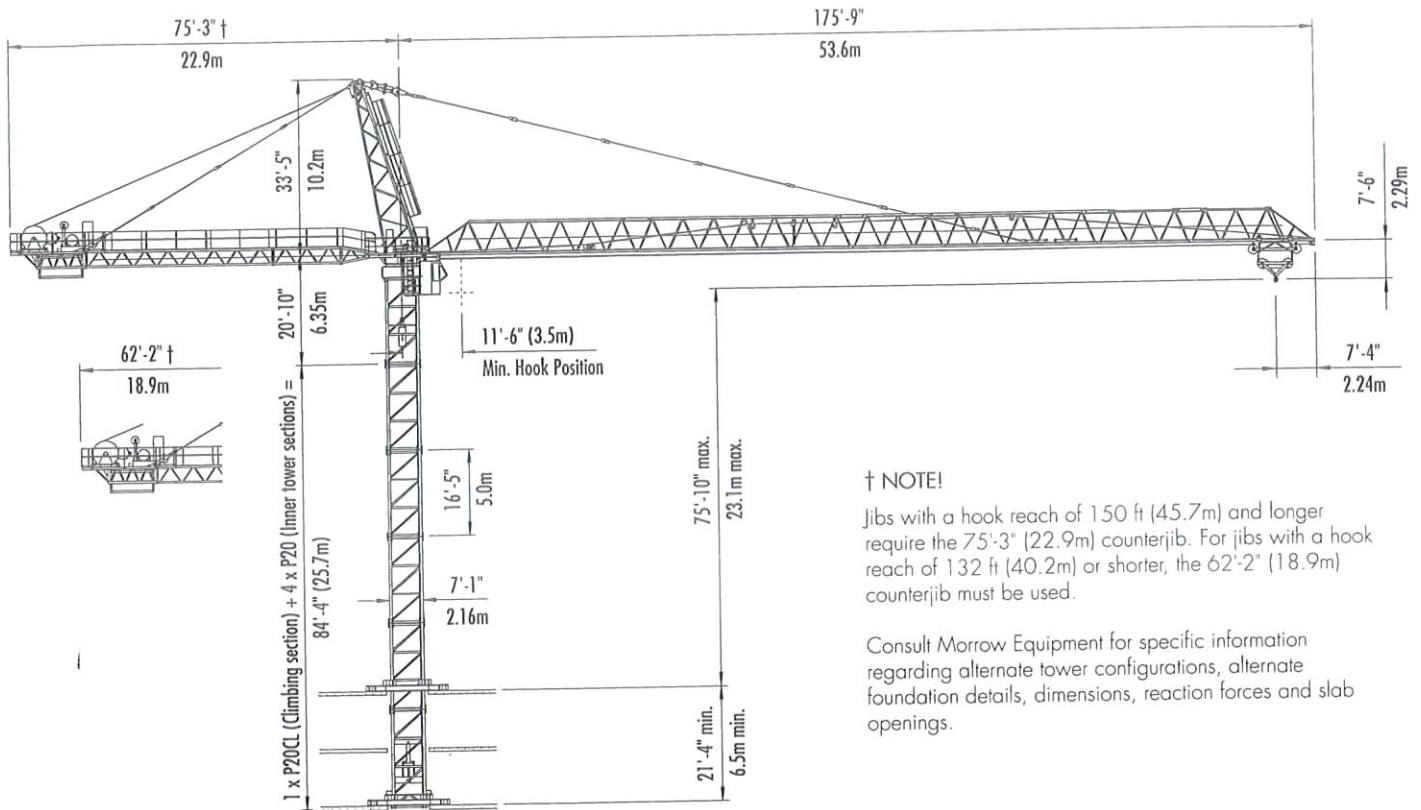
Hook Heights

No. of Tower Sections	Tower Configuration I	Height Under Hook		Tower Configuration II	Height Under Hook	
		ft	m		ft	m
1	P20 Outer Tower	—	—	P20CL Climbing	32.0	9.8
2	P20 Outer Tower	66.3	20.2	P20 Inner Tower	48.4	14.8
3	P20 Outer Tower	87.3	26.6	P20 Inner Tower	64.8	19.8
4	P20 Outer Tower	108.3	33.0	P20 Inner Tower	81.2	24.8
5	P20 Outer Tower	129.3	39.4	P20 Inner Tower	97.7	29.8
6	P20 Outer Tower	150.3	45.8	P2OSR Slipping Tower	—	—
7	P20CL Climbing	—	—			
8	P20 Inner Tower	—	—			
9	P2OSR Slipping Tower	—	—			

Other tower combinations are possible. Contact Morrow Equipment for additional information.



Morrow Equipment

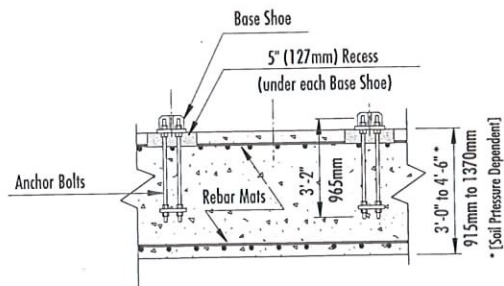


† NOTE!

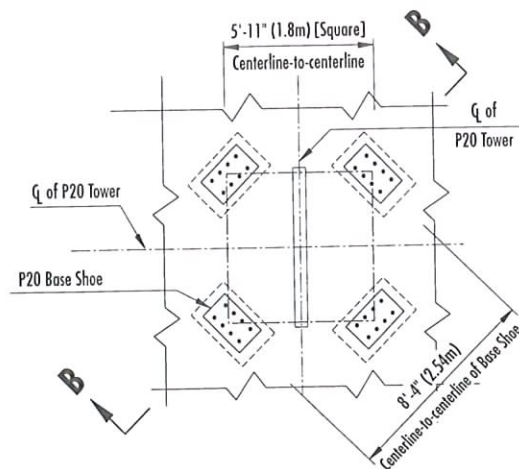
Jibs with a hook reach of 150 ft (45.7m) and longer require the 75'-3" (22.9m) counterjib. For jibs with a hook reach of 132 ft (40.2m) or shorter, the 62'-2" (18.9m) counterjib must be used.

Consult Morrow Equipment for specific information regarding alternate tower configurations, alternate foundation details, dimensions, reaction forces and slab openings.

BOTTOM CLIMBING with P20 Inner Tower Sections (Inside Structure)



P20 Foundation - Elevation
Section B-B



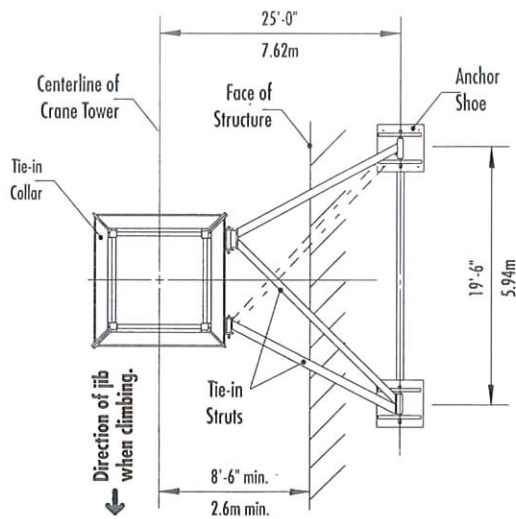
P20 Foundation - Plan

FOUNDATION DETAILS with P20 Inner Tower (Concrete Slab)

NOTE!

If hook height exceeds 330 ft (100m), the number of tower sections above the uppermost tie-in location **MUST** be reduced by 1 outer tower section.

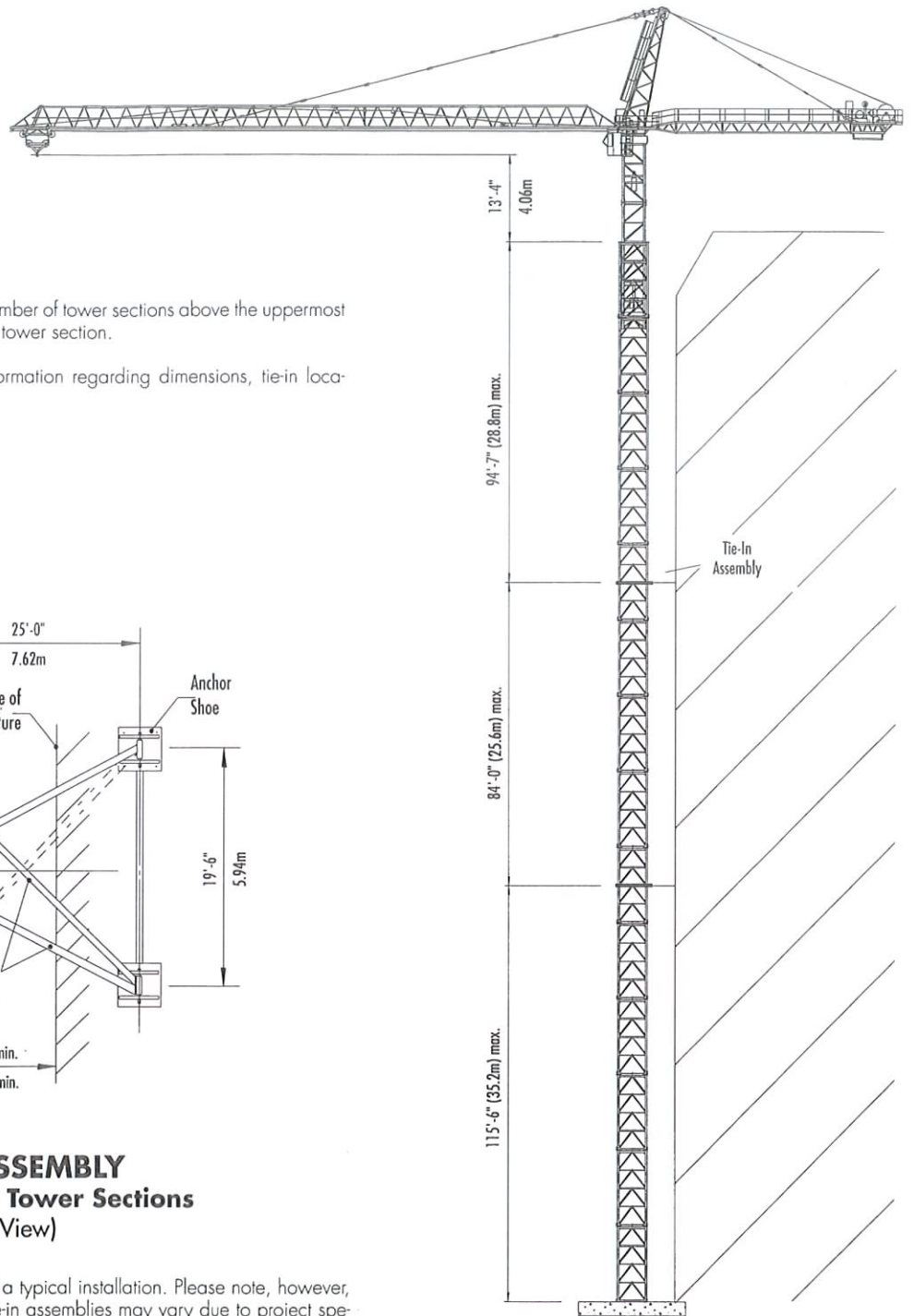
Consult Morrow Equipment for specific information regarding dimensions, tie-in locations, reaction forces and slab openings.



TIE-IN ASSEMBLY
with P20 Outer Tower Sections
(Plan View)

NOTE!

The tie-in assembly shown is an example of a typical installation. Please note, however, that factors determining the installation of tie-in assemblies may vary due to project specific criteria. Contact Morrow Equipment for information regarding alternate tower configurations, dimensions, reaction forces and tie-in locations.



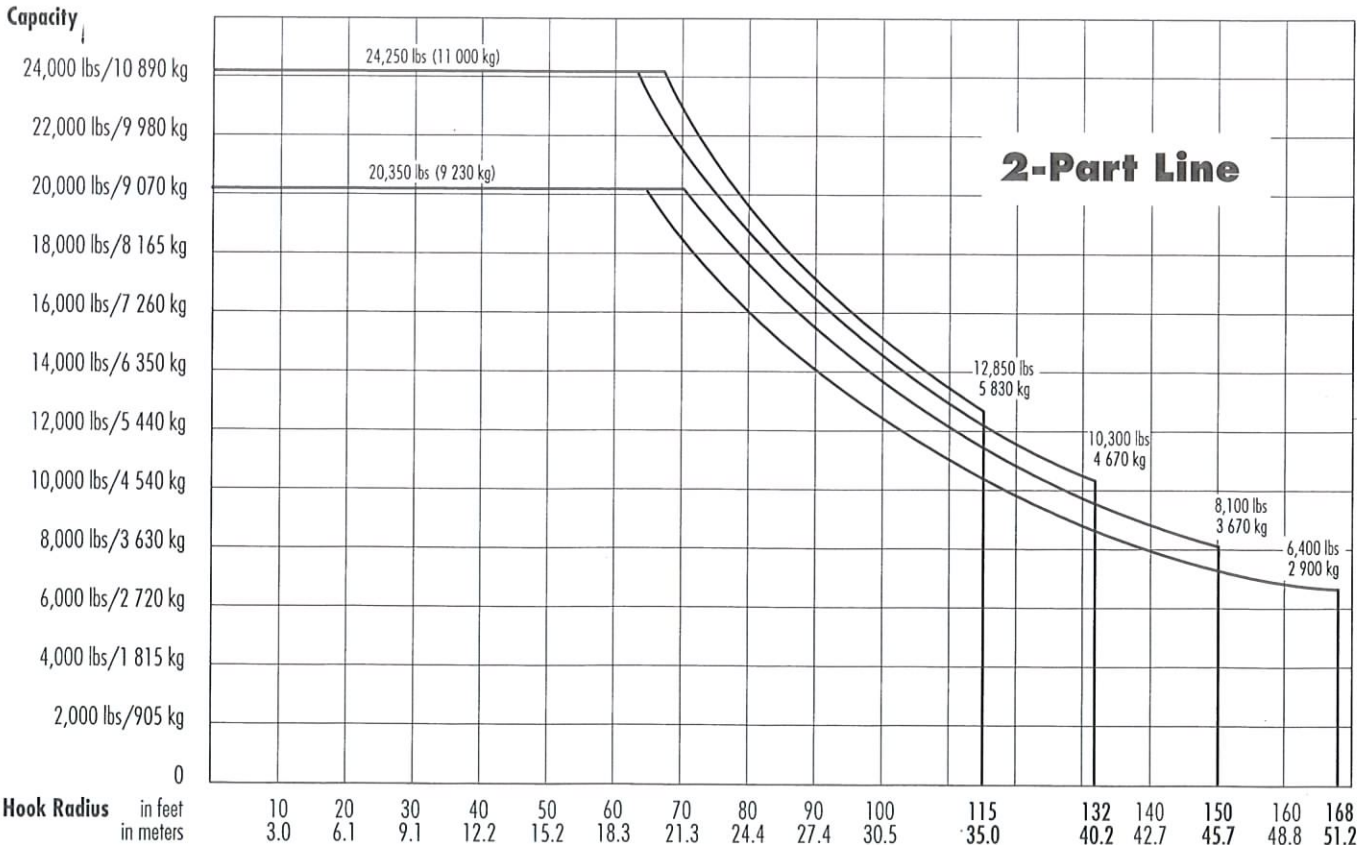
TOP CLIMBING
with P20 Outer Tower
(Tied to Structure)

Radius and Capacities

Pecco Tower Crane Model PC 2000


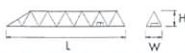

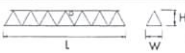
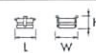
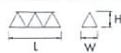
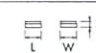

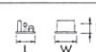



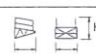


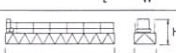

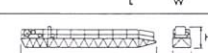
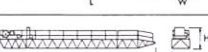



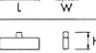

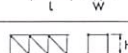
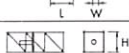
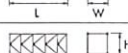

2-Part Line

Hook Radius	2-Part Line Max Capacity - Radius	ft m	20	30	40	50	60	70	80	90	100	110	115	125	132	140	150	160	168
			6.1	9.1	12.2	15.2	18.3	21.3	24.4	27.5	30.5	33.5	35.0	38.1	40.2	42.7	45.7	48.8	51.2
168 ft 51.2m	20,350 lbs - 65 ft 9 230 kg - 19.8m	lbs kg	20,350 9 230	20,350 9 230	20,350 9 230	20,350 9 230	20,350 9 230	18,800 8 530	16,400 7 440	14,200 6 440	12,500 5 670	11,200 5 080	10,700 4 850	9,600 4 350	8,900 4 040	8,200 3 720	7,800 3 540	6,950 3 150	6,400 2 900
150 ft 45.7m	20,350 lbs - 70 ft 9 230 kg - 21.3m	lbs kg	20,350 9 230	20,350 9 230	20,350 9 230	20,350 9 230	20,350 9 230	20,350 9 230	17,750 8 050	15,500 7 030	13,600 6 170	12,100 5 490	11,600 5 260	10,400 4 720	9,750 4 420	9,000 4 080	8,100 3 670		
132 ft 40.2m	24,250 lbs - 64 ft 11 000 kg - 19.5m	lbs kg	24,250 11 000	24,250 11 000	24,250 11 000	24,250 11 000	24,250 11 000	21,900 9 930	18,900 8 570	16,500 7 480	14,500 6 580	12,950 5 870	12,200 5 530	11,000 4 990	10,300 4 670				
115 ft 35.0m	24,250 lbs - 67 ft 11 000 kg - 20.4m	lbs kg	24,250 11 000	24,250 11 000	24,250 11 000	24,250 11 000	24,250 11 000	23,000 10 430	19,900 9 030	17,200 7 800	15,200 6 890	13,750 6 240	12,850 5 830						



Component List

Pecco PC 2000

Description	Dimensions L x W x H	Weight	Description	Dimensions L x W x H	Weight
Tower Top 	34'-10" x 6'-5" x 6'-5" 10.6m x 1.96m x 1.96m	6,450 lbs 2 925 kg	Jib Section ① 	41'-2" x 6'-5" x 6'-7" 4.3m x 1.96m x 2.0m	6,600 lbs 2 990 kg
Turntable (Complete) Upper & Lower Parts 	9'-6" x 9'-7" x 6'-7" 2.9m x 2.92m x 2.0m	14,410 lbs 6 535 kg	Jib Section ② 	41'-2" x 6'-3" x 6'-7" 4.3m x 1.91m x 2.0m	4,890 lbs 2 220 kg
Turntable Upper Part ¹ 	9'-6" x 9'-7" x 4'-6" 2.9m x 2.92m x 1.37m	8,145 lbs 3 695 kg	Jib Section ③ 	17'-7" x 6'-3" x 6'-7" 5.36m x 1.91m x 2.0m	2,120 lbs 960 kg
Turntable Lower Part ² 	7'-0" x 7'-0" x 2'-1" 2.14m x 2.14m x 0.63m	6,265 lbs 2 840 kg	Jib Section ④ 	29'-7" x 6'-3" x 6'-7" 9.0m x 1.91m x 2.0m	3,880 lbs 1 760 kg
DC Hoist Unit with Frame ³ (140 hp/105 kW) 	5'-3" x 7'-5" x 4'-7" 1.6m x 2.26m x 1.4m	12,900 lbs 5 850 kg	Jib Section ⑤ 	17'-7" x 6'-3" x 6'-7" 5.36m x 1.91m x 2.0m	1,630 lbs 740 kg
Operator's Cab with Catwalk 	7'-7" x 3'-4" x 8'-3" 2.3m x 1.0m x 2.5m	770 lbs 350 kg	Jib Section ⑥ 	17'-7" x 6'-3" x 6'-7" 5.36m x 1.91m x 2.0m	1,500 lbs 680 kg
Counterjib Section 1 	7'-10" x 6'-7" x 6'-9" 2.39m x 2.0m x 2.07m	960 lbs 435 kg	Jib Section ⑦ 	6'-2" x 6'-3" x 7'-6" 1.88m x 1.91m x 2.29m	760 lbs 345 kg
Counterjib Section 2 	13'-2" x 6'-7" x 6'-9" 4.0m x 2.0m x 2.07m	2,000 lbs 910 kg	Jib Assembly ⁶ 168-ft (51.2m) ①②③④⑤⑥⑦	171'-7" x 6'-5" x 7'-6" 52.3m x 1.96m x 2.29m	26,520 lbs 12 030 kg
Counterjib Sect. 3 with Control Panel 	36'-2" x 6'-7" x 9'-6" 11.0m x 2.0m x 2.9m	5,475 lbs 2 485 kg	Jib Assembly ⁶ 150-ft (45.7m) ①②④⑤⑥⑦	153'-6" x 6'-5" x 7'-6" 46.8m x 1.96m x 2.29m	23,400 lbs 10 615 kg
Counterjib Section 4 with Hoist Unit 	14'-5" x 12'-4" x 6'-9" 4.4m x 3.77m x 2.07m	14,565 lbs 6 605 kg	Jib Assembly ⁶ 132-ft (40.2m) ①②④⑤⑦	135'-10" x 6'-5" x 7'-6" 41.4m x 1.96m x 2.29m	21,900 lbs 9 935 kg
Counterjib A w/Hoist Unit ⁴ 	55'-9" x 12'-4" x 9'-6" 17.0m x 3.77m x 2.9m	21,000 lbs 9 525 kg	Jib Assembly ⁶ 115-ft (35.0m) ①②④⑦	118'-1" x 6'-5" x 7'-6" 36.0m x 1.96m x 2.29m	20,270 lbs 9 195 kg
Counterjib B w/Hoist Unit ⁵ 	68'-10" x 12'-4" x 9'-6" 21.0m x 3.77m x 2.9m	23,000 lbs 10 430 kg	Trolley 	10'-0" x 7'-11" x 3'-8" 3.0m x 2.4m x 1.12m	1,170 lbs 530 kg
Counterweight Block A 	8'-5" x 1'-0" x 4'-3" 2.57m 0.3m x 1.3m	4,850 lbs 2 200 kg	Hook Block 	6'-5" x 0'-8" x 4'-11" 1.96m x 0.2m x 1.5m	770 lbs 350 kg
Counterweight Block B 	8'-5" x 1'-0" x 2'-7" 2.57m 0.3m x 0.79m	3,200 lbs 1 450 kg	Tie-in Collar P20 (Outer) 	10'-11" x 2'-0" x 11'-7" 3.33m x 0.61m x 3.53m	5,100 lbs 2 315 kg
Tower Section P20 (Inner) 	16'-7" x 7'-1" x 7'-1" 5.05m x 2.16m x 2.16m	5,445 lbs 2 470 kg	Slipping Section P20SR 	16'-7" x 7'-1" x 7'-1" 5.05m x 2.16m x 2.16m	5,900 lbs 2 675 kg
Tower Section P20 (Outer) 	21'-2" x 8'-9" x 8'-9" 6.45m x 2.67m x 2.67m	8,820 lbs 4 000 kg	Climbing Section P20CL 	18'-10" x 7'-1" x 7'-1" 5.74m x 2.16m x 2.16m	12,980 lbs 5 890 kg

NOTE: Weights and dimensions are approximate. Scale components before lifting.

- ¹ Turntable Upper Part includes swing motors. Does not include slewing ring and slewing ring support.
- ² Turntable Lower Part includes slewing ring and slewing ring support. Does not include Upper Part with swing motors.
- ³ Does not include wire rope.
- ⁴ Includes 140 hp (105 kW) DC hoist unit, electrical panel, handrails and suspension. Does not include wire rope. Used with 115 ft (35.0m) and 132 ft (40.2m) jib assemblies.
- ⁵ Includes 140 hp (105 kW) DC hoist unit, electrical panel, handrails and suspension. Does not include wire rope. Used with 150 ft (45.7m) and 168 ft (51.2m) jib assemblies.
- ⁶ Jib Assemblies include jib sections, pendant bars, trolley drive unit, trolley wire rope, trolley and hook block.



Morrow Equipment
COMPANY, L. L. C.

3218 Pringle Road SE • P O Box 3306 • Salem OR 97302 USA • 503/585 5721 • Fax 503/363 1172

The American Home of
LIEBHERR
PECCO

Branch Offices: Atlanta, GA • Chicago, IL • Denver, CO • Honolulu, HI • Houston, TX • Los Angeles, CA
Las Vegas, NV • Millwood, NY • San Francisco, CA • Seattle, WA • Tampa, FL • Washington, DC
Sydney, Australia • Wellington, New Zealand • Vancouver, BC, Canada • Mexico City, Mexico • Monterrey, Mexico